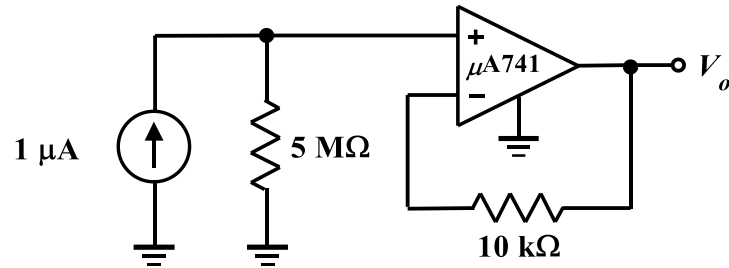


EE/EET 2240
Homework Problem #051



Use Pspice to determine the value of V_o . Use the PSpice Evaluation Library model for a $\mu\text{A}741$ OpAmp. Submit a complete printed copy of your output file, and highlight the answer in some obvious manner. (Don't forget to put a personal identifier in the title line of your input circuit description file – also called the netlist).