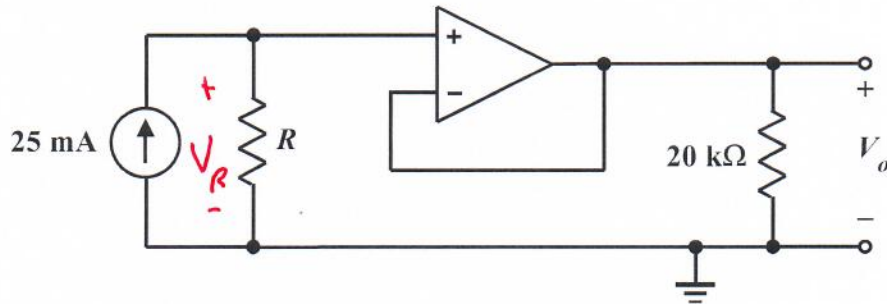


## Homework Problem #039



The OpAmp is ideal. Determine the value of  $R$  required to make  $V_o = 20\text{ V}$ .

$$V_R = V_o$$

$$\Rightarrow (25\text{ mA}) \cdot R = 20\text{ V}$$

$$\therefore R = \frac{20\text{ V}}{25\text{ mA}} = 800\ \Omega$$